



**41 Ladyfield Road, Chippenham, SN14 0AN**

**£255,000**

Offered for sale with NO ONWARD CHAIN this internally renovated semi detached home offers a fresh feel throughout. To the front there are side by side parking spaces and to the rear a generous enclosed garden with shed/store. Internally comprising; entrance hall, lounge, newly fitted kitchen/breakfast room, lean too/family room, two bedrooms and updated bathroom. A ready to move in to home.



### Hallway

Double glazed front door, radiator, stairs to the first floor and door to the lounge.

### Lounge



Double glazed window to the front, fitted blinds, radiator and door to the kitchen/breakfast room.

### Kitchen/Breakfast Room



Two double glazed windows and double glazed doors to the rear, door to the side leading to the garden, under stairs cupboard, range of new floor and wall mounted units, sink and drainer, electric oven, electric hob, washing machine, integral fridge/freezer and breakfast bar.

### Lean Too/Family Room



Double glazed french doors to the garden, double glazed windows to the side and rear and radiator.

### Landing

Double glazed window to the side, doors to all bedrooms and bathroom.

### Bedroom One



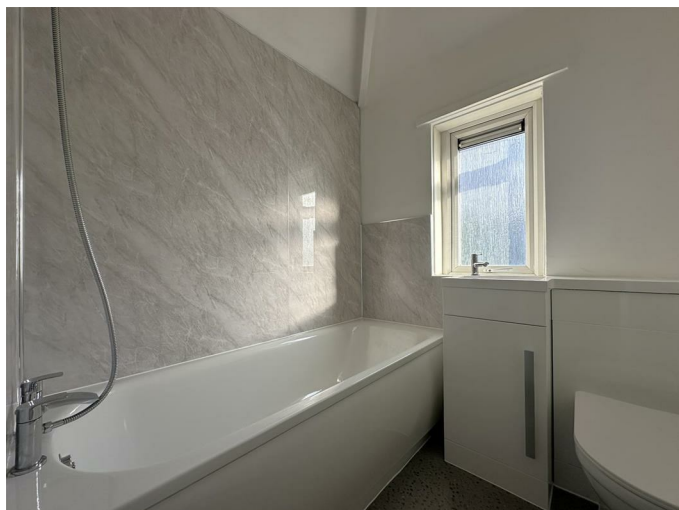
Double glazed window to the front, radiator, airing cupboard housing the gas boiler, storage cupboard and loft access.

## Bedroom Two



Double glazed window to the rear and radiator.

## Bathroom



Double glazed window to the rear, towel radiator, toilet, wash hand basin with vanity storage, bath with shower attachment.

## Rear Garden



Generous plot, laid to lawn, shingle stone, shed/store and gated side access.

## Driveway

Side by side parking spaces for two cars in front of the house.

## Tenure

We are advised by the .Gov website that the property is Freehold.

## Council Tax

We are advised by the .Gov website that the property is band B.

Floor Plan

